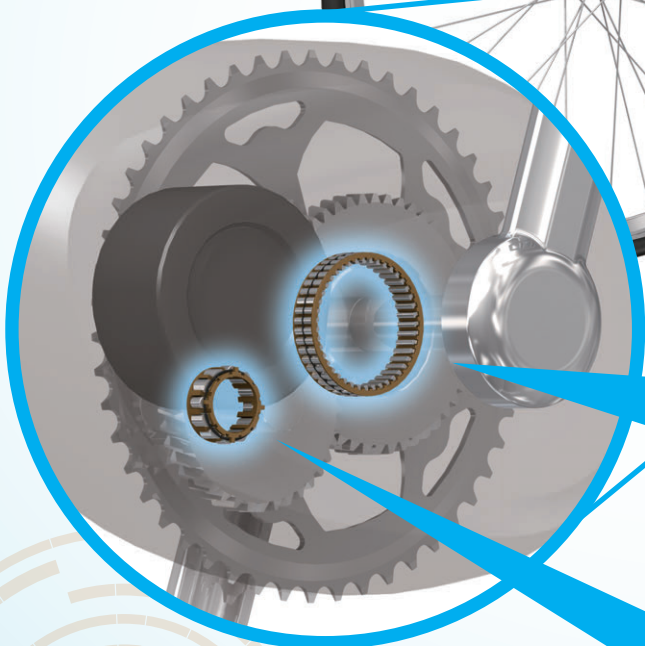
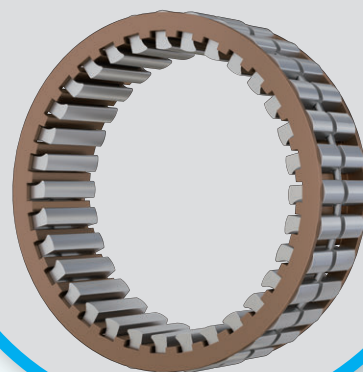


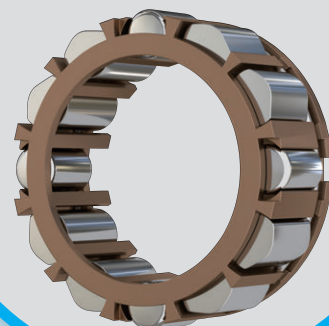
Freewheel Clutch for e-Bike Drive Unit



Camcage Type



Cam & Roller Type



BENEFITS

Diverse lineup


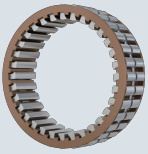
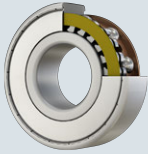
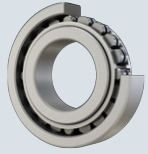
Enables lighter and more compact designs

High-precision transmission of assist force

Reduces noise/improves ride quality


Diverse lineup

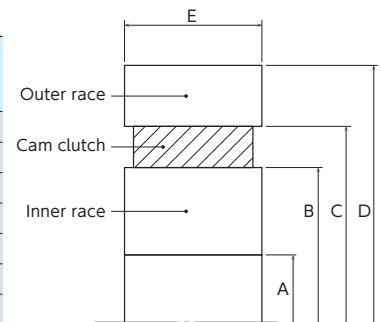
We offer the best specifications for "cam clutches" that connect and disconnect the motor's assist force, depending on the customer's application.

Cam & Roller Type (Radial load resistance)	Camcage Type
 <ul style="list-style-type: none"> ● With bearing function (Radial load resistance) →Contributing to unit downsizing(Q factor reduction)/weight reduction ● Cams share the load evenly →High-precision smooth transmission of assist force ● Concentric holding structure →Contributing to improved noise/ride quality by reducing overrunning frictional torque 	 <ul style="list-style-type: none"> ● High torque transmission performance (Based on our comparison test) →Contributing to unit downsizing/weight reduction ● Cams share the load evenly →High-precision transmission of assist force
Built-in bearing Type	Cam & Roller Type (Axial and radial load resistance)
 <ul style="list-style-type: none"> ● All-in-one (inner/outer races, cams and bearings) →Contributing to unit downsizing/weight reduction ● Cams share the load evenly →High-precision transmission of assist force ● Concentric holding structure →Contributing to improved noise/ride quality by reducing overrunning frictional torque 	 <ul style="list-style-type: none"> ● With bearing function (Axial and radial load resistance) → Enables helical gears, contributing to further downsizing(Q factor reduction)/weight reduction of the unit ● Cams share the load evenly →High-precision smooth transmission of assist force ● Concentric holding structure →Contributing to improved noise/ride quality by reducing overrunning frictional torque <p>Element under development</p>

Transmission Capability/Dimensions

Unit: mm

	Model Number	Allowable Torque Nm	A Inner race I.D.	B Inner raceway diameter	C Outer raceway diameter	D Outer race O.D.	E Width
 <p>Cam & Roller Type (Radial load resistance)</p>	CC104R4-15-8.5	7	-	15	23.294	-	9
	CC104R4-15-10.5	9	-	15	23.294	-	11
	CC104R4-15-14.5	14	-	15	23.294	-	15
	CC110R5-25-8.5	29	-	25	33.294	-	9
	CC110R5-25-10.5	39	-	25	33.294	-	11
	CC110R5-25-14.5	59	-	25	33.294	-	15
	CC116R4-35-8.5	105	-	35	43.294	-	9
	CC116R4-35-10.5	147	-	35	43.294	-	11
	CC116R4-35-14.5	232	-	35	43.294	-	15
	CC120R4-45-8.5	207	-	45	53.294	-	9
	CC120R4-45-10.5	276	-	45	53.294	-	11
CC120R4-45-14.5	427	-	45	53.294	-	15	
 <p>Camcage Type</p>	BB101815	44	-	15	23	-	12
	BB102625	133	-	25	33	-	12
	BB103635	285	-	35	43	-	12
	BB104445	482	-	45	53	-	12
	 <p>Built-in bearing Type</p>	BB15	29	15	-	-	35
BB17		43	17	-	-	40	12
BB20		61	20	-	-	47	14
BB25		78	25	-	-	52	15
BB30		140	30	-	-	62	16
BB35		173	35	-	-	72	17
BB40		260	40	-	-	80	22



※1. Above values are for reference only. (Optimum design is made according to customer requirements/applications.)

※2. Cam & Roller Type (Axial and radial load resistance) are under element development, dimensions will be updated separately.

Tsubakimoto Europe B.V.

Tel : +31 (0)78 6204000

Mail : info@tsubaki.eu

Web



Movie

